

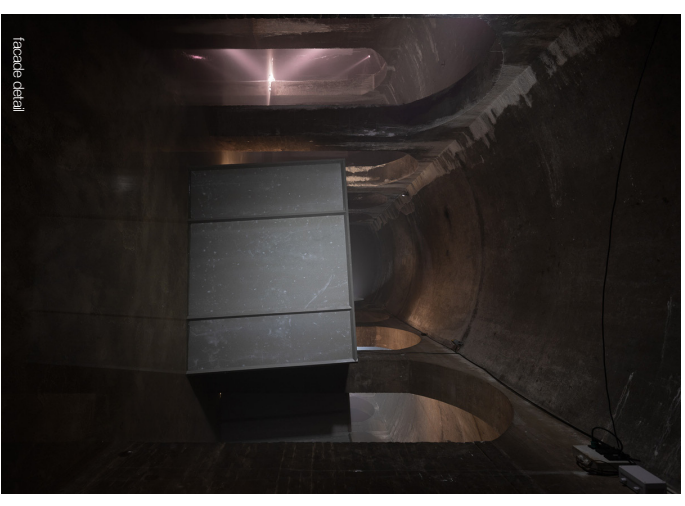
SKAFTE AYMO-BOOT
short portfolio



Installation view



Interior view



facade detail

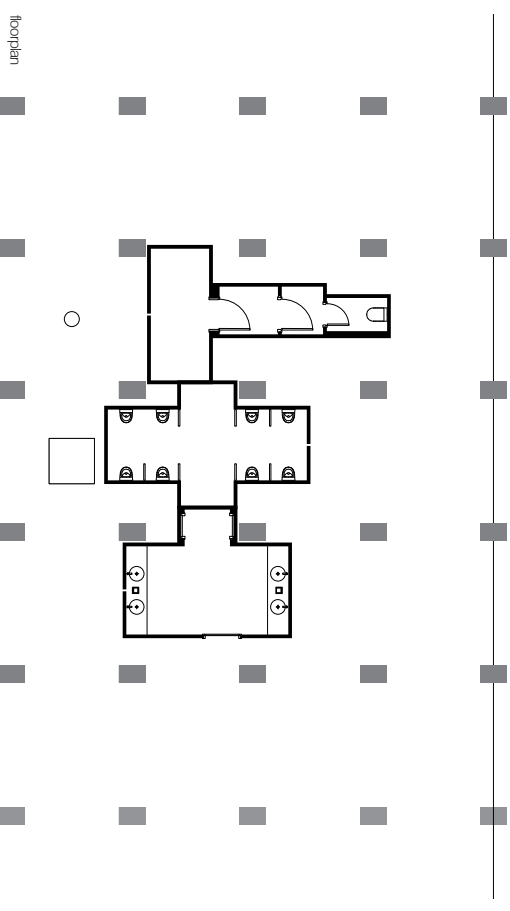
POWER TOILETS / UNFCCC: It Is Not The End Of The World – Exhibition installation in Copenhagen (DK / 2019)

In collaboration with the artist collective SUPERFLEX we have staged a time travel into the future in the dark, underground halls of the former water reservoir Cisterne. A flood has occurred, decay has begun, and the visitor encounter relics that seem to come from a distant past: our own present. In the cave-like and different climate of Cisterne, the visitor will take in the exhibition not only with the eyes and mind but with the entire body. One of the elements, the visitor encounters in the innermost part of Cisterne, is a landscape of toilets partially submerged in water. A sculptural form robbed of its original function, not unlike the former water reservoir in which it is placed. As an exact copy of the executive toilets of the Bonn headquarters of the United Nations Framework Convention on Climate Change (UNFCCC), it appears as a portrait of human consumption and our global struggle to counteract the damage this has inflicted. With this exhibition, SUPERFLEX and NEZU AYMO turns the dystopian scenario of the end of humanity into a more multifaceted narrative. As the exhibition title suggests, the changes might be the end of humanity but not necessarily the end of the world.

Client : Frederiksbergmuseerne
 Site : Copenhagen, Denmark
 Programme : exhibition installation, 2.400 m²
 Team : NEZU AYMO architects
 in collaboration with Superflex
 Type : commission, delivered Mar. 2019



Interior view



floorplan



folding status, closed and unfolded, outcome of co-design process with students

Go Your Own Way – Designing the vocational school of the future (NL / 2015-16)

Technology is ever evolving, stretching and transforming our interaction with each other and the spaces we are in. At the same time, we keep buildings for a long time, while whatever is the current state of the art of a technology may emerge and pass in much shorter time spans. So we must equip ourselves to be flexible: Instead of arranging spaces to the demands of a specific technology, we will develop a series of strategies to allow our spaces to change. In that spirit we aim to address the existing buildings of secondary education, whether they are already technologically obsolete or new and *future obsolete*.

Our goal for the project is to outline a detailed and practical strategy for allowing educational buildings to be transformed according to the needs of students, teachers and technological platforms and tools, as they emerge. For this purpose we have devised a co-design process, that will deliver a series of small units of change. Such a unit may be a work node housing a particular tool to be placed in a school until it is obsolete, or it may be a contemplation node for allowing a particular new way of work to take place, changing the flow of a particular point of a school building and allowing for schoolwide transformations.

The project has been presented at the International Architecture Biennale Rotterdam 2016 and was exhibited at Dutch Design Week 2016 in Eindhoven.

Client : Ministry of Education, Research and Culture / Dutch Creative Industries Fund
 Site : Hout en Meubelrijkscollege Amsterdam / Vathorstcollege Amersfoort
 Team : Skate Ayrto-Bod and Kristina Andersen
 Type : research



workshop scale 1:100



workshop scale 1:50



workshop scale 1:1



construction scale 1:1



POWER TOILETS / UNESCO – Public toilet building in Gwangju (KR / 2013)

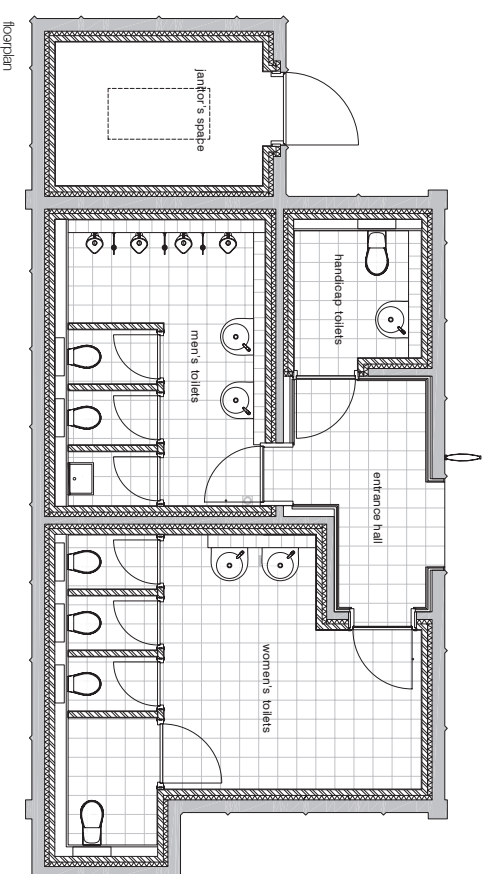
Power Toilets engages its users in questioning the relationship between original and copy, exclusivity and original and, ultimately, the infrastructures of power and everyday use.

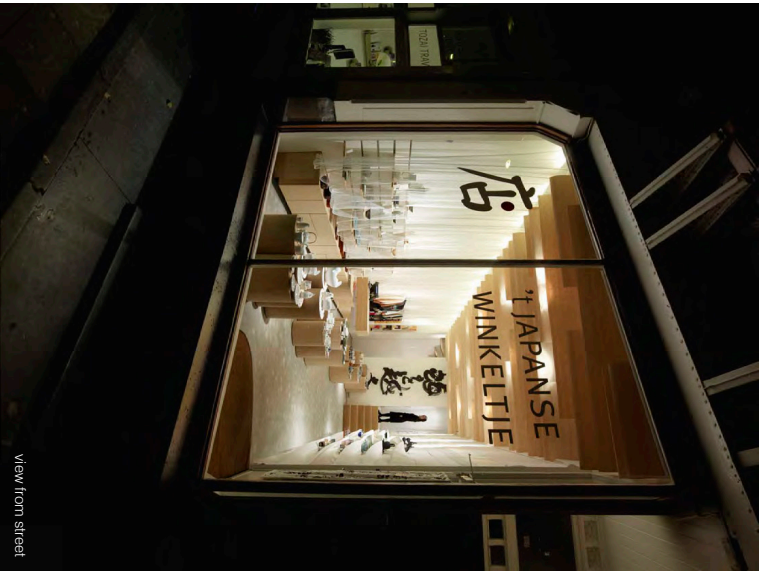
In the South Korean city Gwangju we replaced a run-down public toilet with a copy of the toilets used by the Executive Board of the UNESCO headquarter in Paris. Gwangju was included in the UNESCO Memory of the World Register in 2011 as a place of origin of the movement of Korea towards democracy after the riots in 1980.

The exterior of the Power Toilets looks incomplete or timeless - like backstage to a movie setting or as if the toilets have been taken out of a larger building. Entering the toilets, you get a feeling of being in another place. Based on photos taken secretly by a staff member - the executive floor of the UNESCO headquarter is not accessible to the public - the drawings of the toilets were meticulously reconstructed. The exact same materials and detailing as in the UNESCO toilets have been applied - French toilets and sanitary accessories were specially imported to Korea, and signs and lamps were rebuilt to every detail.

Power Toilets / UNESCO is realized in the frame of Gwangju Folly II. Artistic director: Nikolaus Hirsch

Client : Gwangju Biennale Foundation
 Site : Gwangju, South Korea
 Programme : public toilet, 85 m²
 Team : NEZU AMMO architects
 in collaboration with Superflex
 Type : commission, delivered Nov. 2013





View from street



ground floor view from entrance



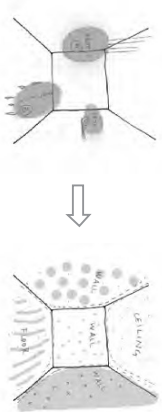
View ground floor

't Japaneze Winkelje – Shop interior in Amsterdam (NL / 2009-2010)

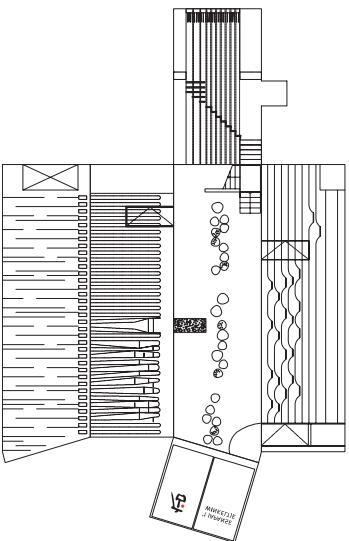
Nominated LA Award 2010

NEZU AYMO has been commissioned to design the renovation of the interior of a Japanese shop, located in the centre of Amsterdam. Since 1976, the shop has been selling a variety of Japanese products. After the renewal, the range of items is a careful selection of exclusive ceramics, kimonos, Japanese paper and lamps.

On the ground floor, the basic elements of the space itself – walls, floor and ceiling – are transformed into display surfaces, with each an own character. On the first floor four different thematic rooms become a delicately changing gradation of light and shadow and spatial qualities. The renovation places traditional Japanese architectural concepts and materials in a new context. The material choices reflect the fragility and lightness of the items sold in the shop. The interior is partly handmade out of materials such as paper, bamboo or textiles, turning the shop into a piece of 'haute couture architecture'.

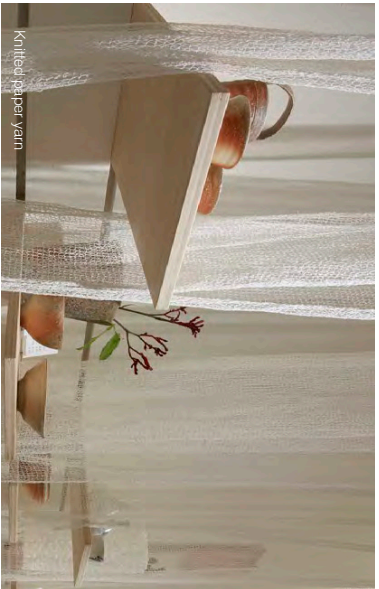


The basic architectural elements: walls, floor, and ceiling, become display objects.



unfolded ground floor

Client : 't Japaneze Winkelje
 Site : Amsterdam, Netherlands
 Programme : shop, studio, 200 m²
 Type : commission, delivered March 2010



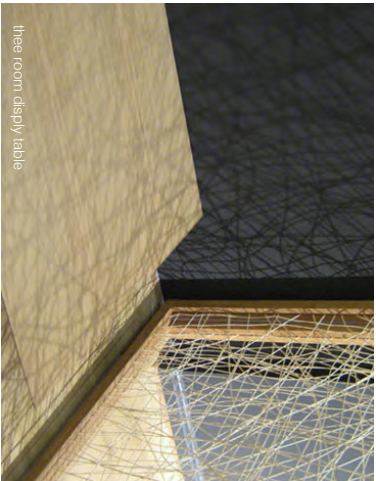
knitted paper yarn



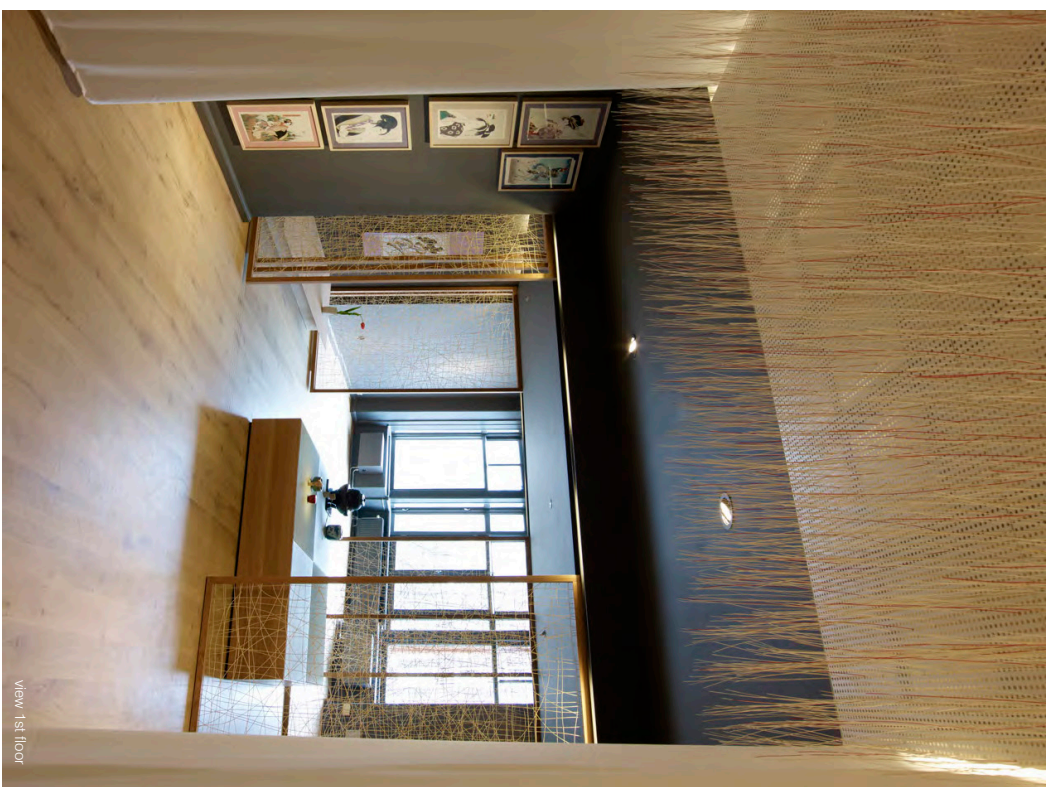
paper ceiling



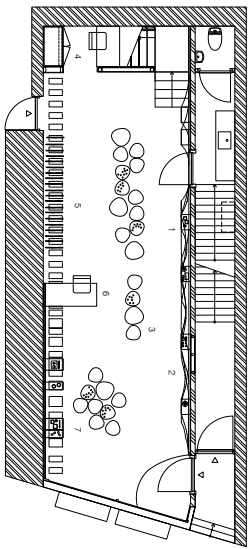
Shell display wall



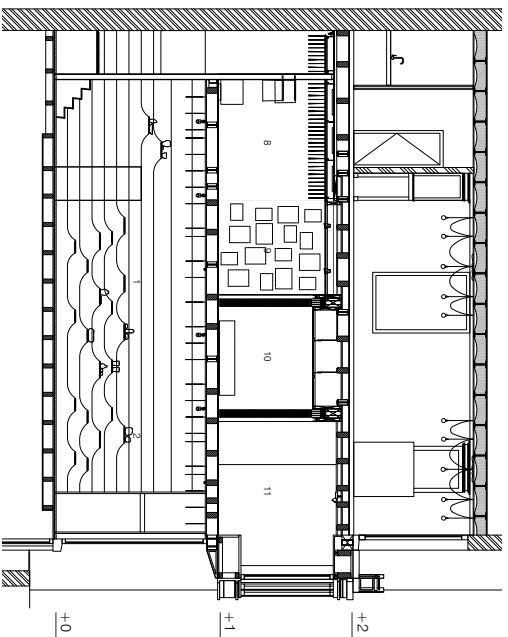
three room display table



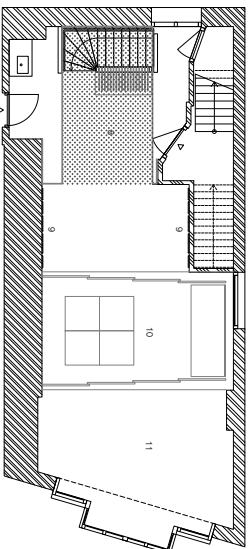
View 1st floor



ground floor plan



section



1st floor plan

1. Sake sets
2. Tea pots
3. Display tables
4. Working space
5. Kimono's
6. Cashier
7. Ceramics
8. Paper
9. Prints
10. Tea room
11. Exposition



site view

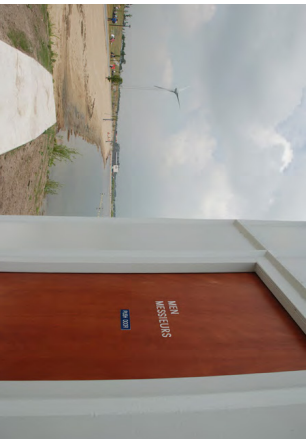
POWER TOILETS – Public toilet building in Heerhugowaard (NL / 2008-2010)

Winner The Great Indoors Award 2011

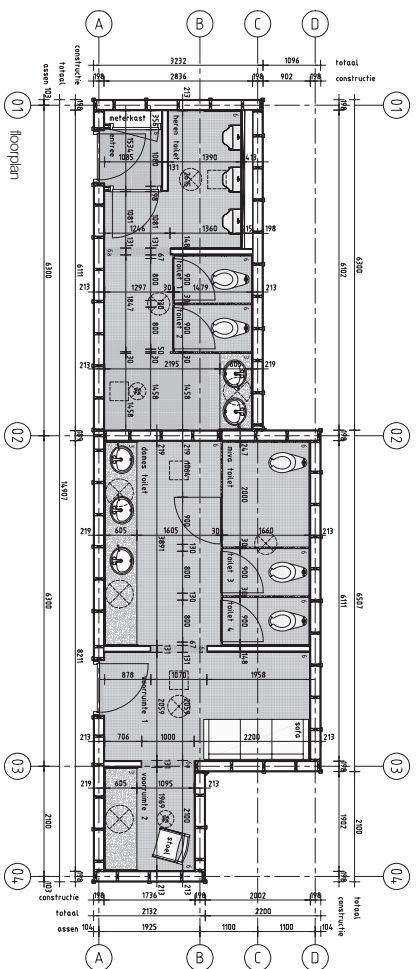
An unusual lavatory building has been erected on a beach in the new recreation area Park van Luna in Heerhugowaard: Power Toilets, an exact copy of the lavatories used by the members of the United Nations Security Council in New York.

The exterior of the Power Toilets looks incomplete or timeless - like backstage to a movie setting or as if the toilets have been taken out of a larger building. The interior is a copy, as precise as possible, of the UN Security Council toilets. Based on photos taken secretly by an ex-UN staff member - the UN headquarters is one of the most secured buildings in the world - the drawings of the toilets were meticulously reconstructed. The exact same materials and detailing as in the UN toilets have been applied - marble division walls, stainless steel doors, yellow ceramic tiles, grey antirattle mosaic floor tiles, American Standard toilets and urinals were specially imported from the United States, and furniture and sanitary accessories were rebuilt to every detail.

When entering the toilets, they appear to be slightly different from other public toilets due to the materialization and the equipment. Thus, standing in the UN-Headquarters toilets in Heerhugowaard you get a feeling of being in another time and place. Furthermore, the UN represents the power and question hierarchical rights and peace are protected and maintained. Power Toilets distribute the idea of power and question hierarchical structures by transferring the most basic elements of this power structure. With the Power Toilets, bathers and conceits at the Park van Luna are free to use the same toilets as the world's most powerful leaders.



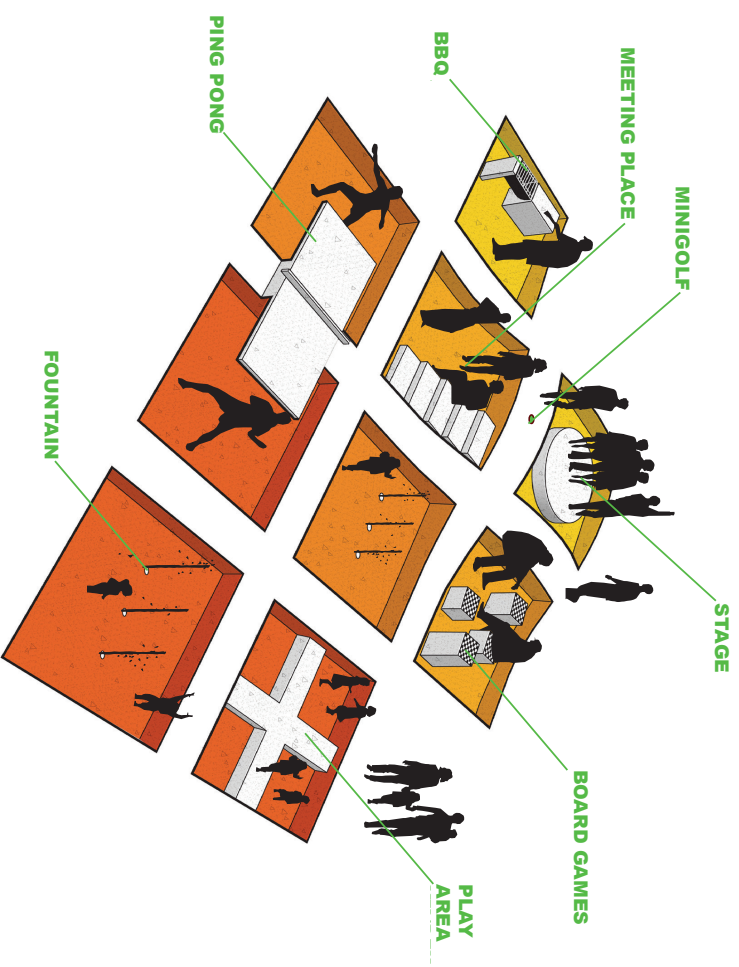
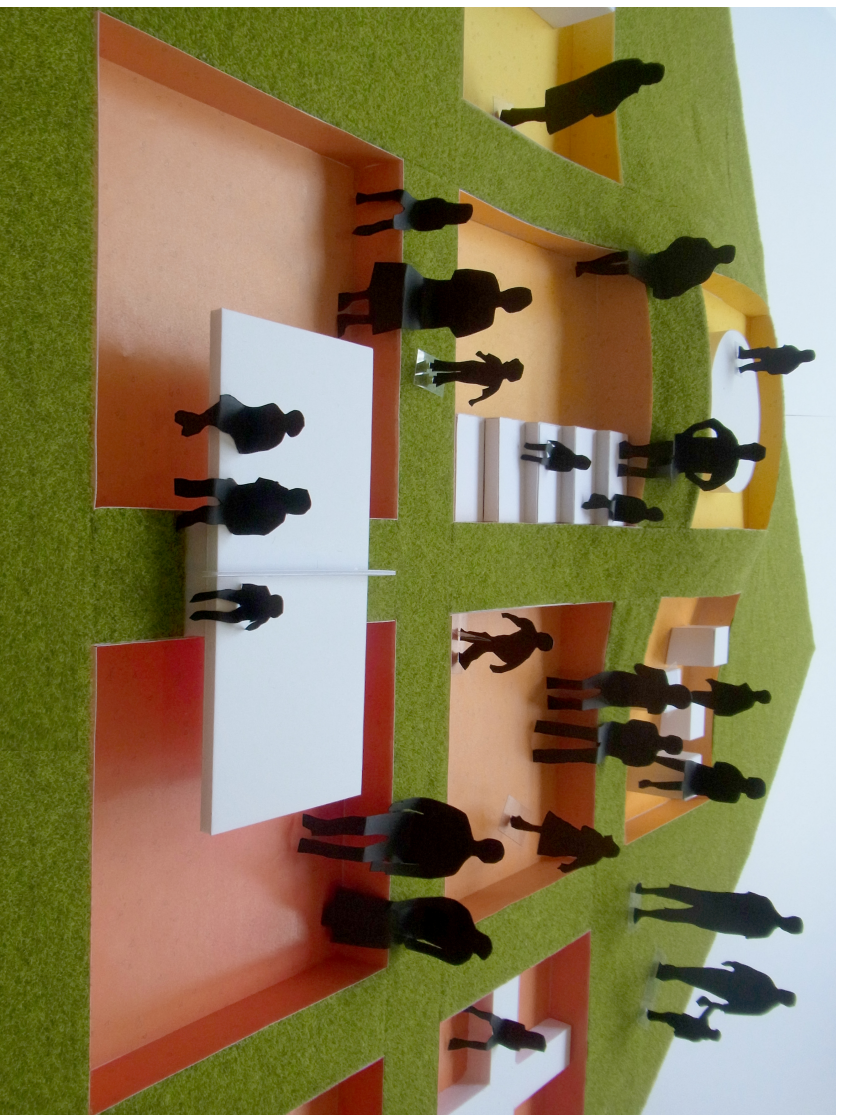
Client : Municipality of Heerhugowaard
 Site : Heerhugowaard, Netherlands
 Programme : public toilet, 55 m²
 Team : collaboration with Superflex
 Type : commission, delivered June 2010



ORIGINAL PHOTOS FROM THE UN BUILDING IN NEW YORK

original photos from the UN building in New York





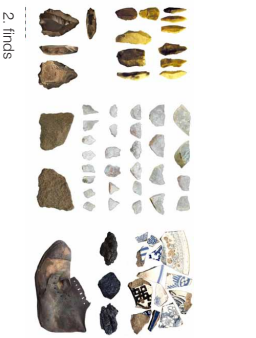
added functions based on suggestions from the neighbourhood

Heerlen Holes - New public space in a miners' village (NL / 2015-17)

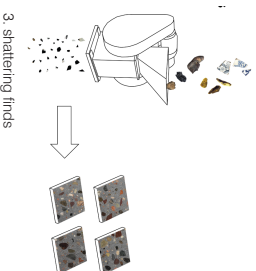
Heerlen's past as the centre of the Dutch mining industry is concealed in its landscape. After the closing of the mines in the 1960's and 70's, all physical remnants were removed and covered by nature or buildings. Apart from a couple of mine buildings and slag hills, the only concrete leftovers are scattered enclosures of miners' housing. By opening the surface of the landscape, we symbolically open the memory of the area and dig into its lost identity. Establishing an archaeological excavation in the centre of the Nieuw Lotbroek miners' colony, we dig into the ground together with locals of different generations and professionals and register everything that is found. The archaeological excavations will both function as a place where we collectively look for the roots of Heerlen and as a space for sharing narratives. When the diggings has ended, the finds will be shattered into small pieces and used as filling material for terrazzo paving tiles. The surface of the excavation site will be covered with the tiles, turning it into a new public space for the area, containing a communal memory of the past and the future. This new village square will function as a meeting place, incorporating ideas from the neighbourhood for surrounding functions. Here the first steps in a communal process with residents, housing cooperation and municipality to redefine the identity of this worker's neighbourhood can be made, forming a core for future developments in Nieuw Lotbroek.



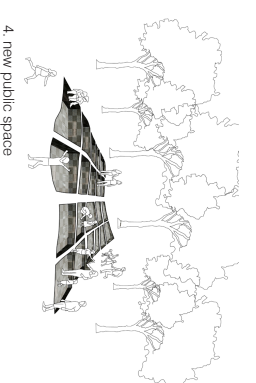
1. staged excavation



2. finds



3. shattering finds



4. new public space



digging



psykiatrinkyngen set fra syd



foyer

DNV Gødstrup Psykiatri – Forslag til et nyt psykiatrisk hospital (DK / 2014)

Psykiatrinkyngen kobler sig fysisk og funktionelt på det eksisterende hospitals ryggrad. I stedet for at forlænge det centrale forløb i en gang der ender blindt, har vi valgt at etablere en søjle som leder ud i psykiatrinkyngens forskellige afdelinger og tilhænge til udgangspunkter. Dette hovedgreb sætter takten for psykiatriens arkitektur, som spindes op omkring transparente, glidende bæreløsestrukturer, grønne gårdhaver, generos naturudsigt og en praktisk organisering af funktioner. En bugende facade binder cirkerne sammen og giver byggeriet et levende udtryk. Kyngan er åben mod det omkringliggende landskab og trækker samtidig naturen ind i de konkave løkker. Dermed har patientværelserne generøs udsigt uden direkte indkig til hinanden.

Udearealerne har stor betydning for helheds- og sansendeindtryk. Psykiatrinkyngens gårdhaver er lysgædte, men er samtidig rekreative, rehabiliterende landskaber. Ved at integrere haverne naturligt i byggeriet undgår man hegn, hække og lignende foranstaltninger, idet alle får adgang til kvalitative uderum med godt mikroklima.

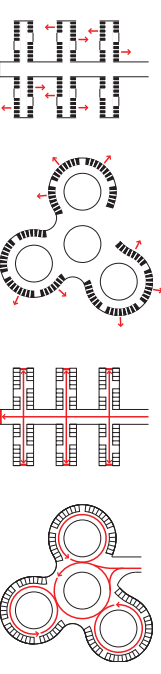
Den nye psykiatrinkynges menneskelige skala, bløde formsprog og intuitive tilgængelighed danner sammen med naturlementer og terapi et helende miljø, hvori patienten og det individuelle indlæggelsesforløb er i centrum.



modellado



situationsplan



traditionelt:
indkig til gæsterne fra
sengstuerne

Psyk DNV Gødstrup:
åben sengestuer nær
landskab

traditionelt:
gangge ender blindt og
glædeløse

Psyk DNV Gødstrup:
bygningens form skaber
bygningens struktur
og lov

indkik / udsigt

gangge / cirkulation

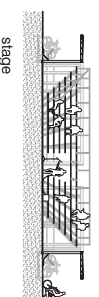
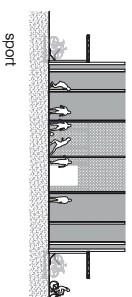
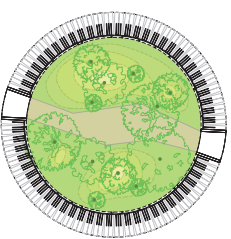
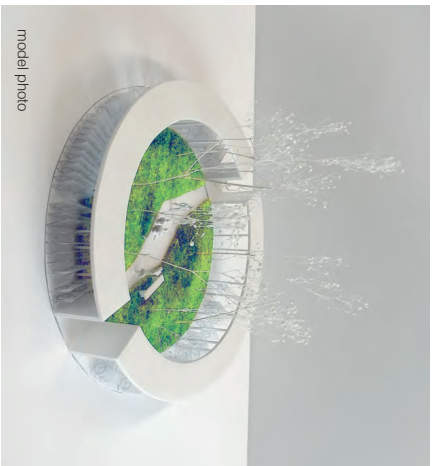


sengstue



Sloterdijk Station Square - Design of square with parking facilities for 1.500 bikes (NL/2012)

The study for a new Sloterdijk Station Square suggests solving the bicycle parking problem, the introduction of new program, and the addition of green in one simple gesture. Arranging parking places for 1500 bikes in circles of different sizes, with ring shaped roofs, a variety of open spaces are created in the centre of the circles. Here, different types of public space can be accommodated: mini parks, sport facilities, stage, viewing platform, outdoor café. The new square will add a slow traffic layer to the station transport hub at the same time as providing a place to stay, meet, relax or wait for travellers and Sloterdijk office workers: a station square and neighbourhood square in one.



Client : Onwikkelingsbedrijf Gemeente Amsterdam
 Site : Amsterdam, Netherlands
 Programme : public space, 155ha
 Team : NEZU AMVO architects
 Type : commission

